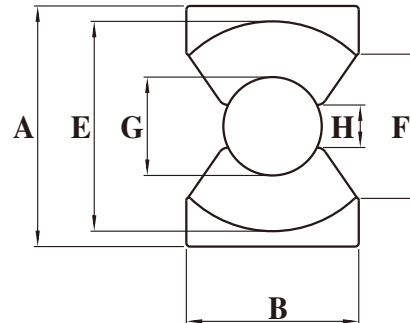
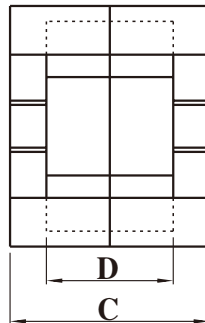


Dimension: (UNIT:mm)

A	41.5 ± 0.9
B	28.0 ± 0.6
C	39.8 ± 0.3
D	29.5 ± 0.4
E	37.0 ± 0.6
F	28.0Min
G	14.9 ± 0.3
H	6.05Min

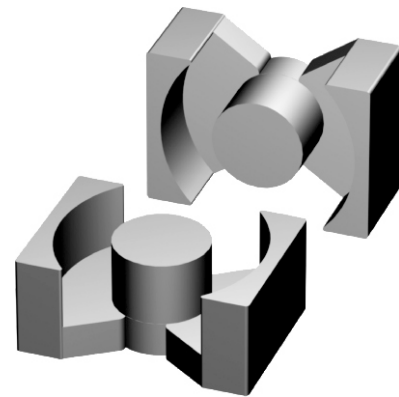


Test conditions

AL: F=10.0KHz U=0.3V N=10Ts

Effective parameter

C1(mm) ⁻¹	Ae(mm ²)	Le(mm)	Ve(mm ³)	Weight(g)
0.507	201	102	20500	≈97



Properties of core sets under power conditions

Core sets for general purpose transformers and Power applications.

Clamping force for Al measurements, 80+/-20N.

Grade	AL (nH)	μe	AIR GAP μm	Type number
P4	4900 ± 25%	≈ 1980	≈ 0	PQ4040-P4
HQ2KA	4200 ± 25%	≈ 1690	≈ 0	PQ4040-HQ2KA

Grade	B (mT) at		Core loss (w) at	
	H=250 A/m F=10KHz T=100℃	f=100 KHz B=100mT T=100℃	F=100 KHz B=200mT T=100℃	F=500 KHz B=50mT T=100℃
P4	≥ 320	≤ 2.1	≤ 12.6	-
HQ2KA	≥ 320	≤ 1.65	≤ 10	≤ 8.0

Note:

- 1: Document is the property of FUAN Inc & is not allow to be duplicated without authorization
- 2: RoHS compliant.