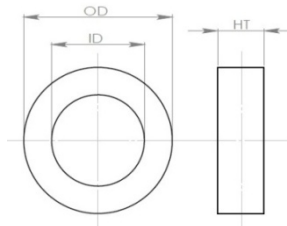


一、尺寸标准/Dimension Standards (单位/Unit: mm)



---	OD (mm)	ID (mm)	HT (mm)	Le(cm)	Ae(cm ²)	GW(g)
外壳尺寸 /Case Dimensions	28.5 MAX	13.0MIN	13.3MAX	-	-	-
铁芯尺寸 /Core Dimensions	25	16	10	6.44	0.36	16.5 Ref

备注/Note:

Le: 磁路长度/Magnetic Path Length.

Ae: 有效截面积/Effective cross section area.

GW: 总质量/Gross weight.

二、电气特性参数/Electrical Characteristics

电感 INDUCTANCE	圈数 Turns	测试条件 Testing Condition	测试仪器 Testing Equipment
47-86 μ H	1Ts	10kHz/0.3V	TH2816B LCR 或同等仪器
12-22 μ H	1Ts	100kHz/0.3V	TH2816B LCR 或同等仪器

三、材料特性/Material Characteristics:

NO.	项目/Item	单位/Unit	参考值 Reference value
1	饱和磁感强度 (Bs) Saturated induction density	T	1.2
2	初始磁导率 (μ_i) Permeability	Gs/Oe	8×10^4
3	居里温度 (Tc) Curie Temperature	°C	570
4	密度 (ρ) Density	g/cm ³	7.25
5	电阻率 (δ) Resistivity	$\mu\Omega \cdot \text{cm}$	130
6	填充系数 (k) Stacking Factor	-	> 0.75

四、材料清单/BOM:

NO	名称 Designation	规格 Specification	材料 Material	生产厂家 Manufacturer	安规号 UL NO	RoHS
1	磁芯/Core	25×16×10mm	1K107B	中研非晶 CATECH	--	Y
2	护盒/Case	25×16×10mm	PBT	-	-	Y
3	粘结剂 /Glue	704	硅橡胶 /Silicone rubber	-	-	Y

五、工艺要求/Process Requirement

- 1、外观清洁，色泽均匀/Clean appearance and uniform color
- 2、外壳为白色且无破损/White and without damage;
- 3、性能符合要求、环保/ Characteristics performance requirements and environmental protection.
- 4、外壳可耐温 130℃/Case temperature resistance 130℃

六、工作环境及储存环境条件/Working and Storage Condition

- 1、存储温度/ Storage Temperature: -10℃—+40℃;
- 2、相对湿度/Relative humidity: ≤ 80%;
- 3、大气压力/ Atmospheric pressure: 86-106Kpa.
- 4、工作温度范围/Range of working temperature: 130℃

七、包装标准及运输/Package standards and transportation

- 1、包装标准/Package standards:
 - ①包装/Package.
 - ②每箱包装数量/Pack quantity:
 - ③外箱标示符号/The marks outside of the box: 小心轻放、防潮、防撞（易碎）等储存符号/ Handle with Care, Keep Dry, Fragile ,etc.
 - ④外箱标示内容/The Content of outside of the box: 产品名称，生产日期，数量，批号，公司名称。Production Model, Date of manufacture ,Quantity、Lot Number、Ind Coope.
- 2、运输方式/Transportation: Freight or Express

八、出货标准及允收标准/ Delivery and Acceptance Standards

出货检验抽样标准及允收标准: GB T2828.1-2012 一次抽样标准 II (AQL 值): CR=0, MAJ=0.65, MIN=1 / Sampling standard and acceptance standard for shipping inspection: GB T2828.1-2012 Primary sampling standard II (AQL value): CR = 0, MAJ = 0.65, MIN = 1