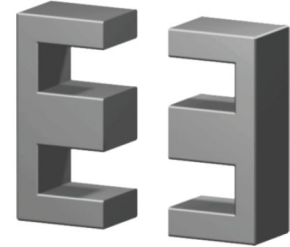
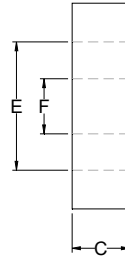
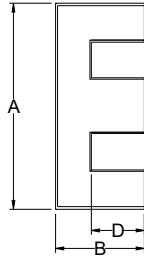


Dimension: (UNIT:mm)

A	16.10 ± 0.30
B	8.05 ± 0.20
C	4.50 ± 0.20
D	5.90 ± 0.20
E	11.30 Min
F	4.50 ± 0.20



Effective parameter

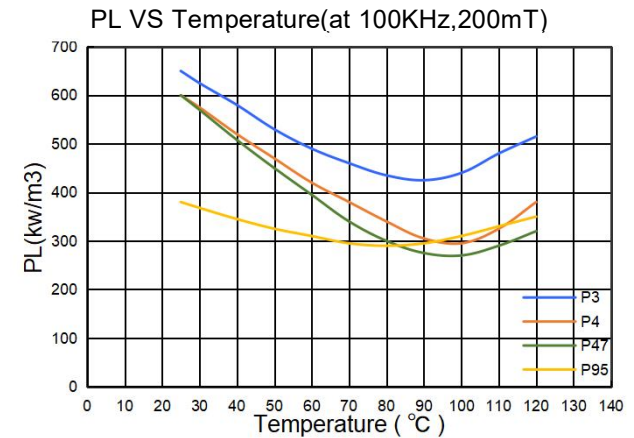
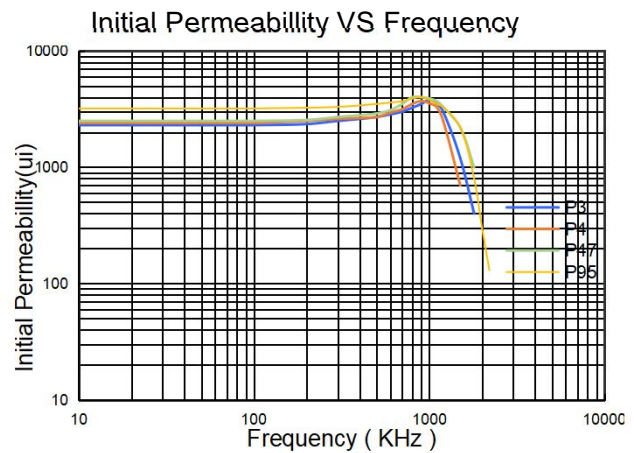
C1(mm <sup>-1</sup> )	Le(mm)	Ae(mm <sup>2</sup> )	Ve(mm <sup>3</sup> )	Wt(g/set)
2.002	37.84	18.90	715.2	4.1

Core sets for general purpose transformers and Power applications.  
Clamping force for AI measurements,80+/-20N.

Test conditions

AL: F=1.0KHz U=0.25V N=10Ts (HP-4284A).

Grade	AL (nH)	Air Gap um	Type number
P3	63 ± 3%	≈ 490	EF16 -P3
	100 ± 3%	≈ 288	EF16 -P3
	160 ± 5%	≈ 171	EF16 -P3
	250 ± 8%	≈ 105	EF16 -P3
	315 ± 10%	≈ 82	EF16 -P3
	1100 ± 25%	≈ 0	EF16 -P3
P4	1150 ± 25%	≈ 0	EF16 -P4
P47	1150 ± 25%	≈ 0	EF16 -P47
P95	1430 ± 25%	≈ 0	EF16 -P95



Properties of core sets under power conditions

Grade	ui	Bs(mT)		Max core loss (W) at 100KHz,200mT		
		25°C	100°C	25°C	60°C	100°C
P3	2300	510	390	0.82	0.56	0.51
P4	2400	510	390	0.75	0.53	0.38
P47	2400	530	420	0.75	0.50	0.34
P95	3200	510	390	0.48	0.35	0.40

Note:

- 1:Document is the property of FUAN Inc & is not allowed to be duplicated without authorization
- 2:ROHS compliant.