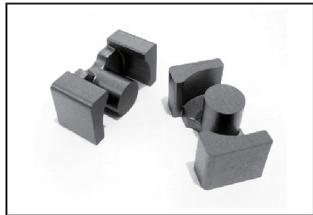


EVD CORE



TYPE	FIG.	Dimensions(mm)					
		A	B	C	D	E	F
EVD15	1	14.8+0.7/-0.5	9.0+0/-0.3	7.0+0/-0.4	5.8+0/-0.4	10.8+0.6/-0	6.0+0.4/-0
EVD25	2	25.0+0.6/-0.3	13.0+0/-0.4	12.7+0/-0.5	8.8±0.25	19.2+0.9/-0	9.45+0.5/-0
EVD30	3	29.7±0.8	16.4±0.3	12.5±0.4	11.6±0.3	22.1±0.5	11.9±0.3

LP CORE



TYPE	FIG.	Dimensions(mm)					
		A	B	C	D	E	F
LP16.5/23/8.7	1	16.5±0.3	11.7±0.15	8.7±0.2	5.7±0.2	12.5±0.3	8.7±0.3
LP25/22/13	1	25.0±0.7	11.2±0.2	12.9±0.3	8.6±0.3	18.55min	8.2±0.2
LP25/32/13	1	25.0±0.7	15.9±0.2	12.9±0.3	8.6±0.3	18.55min	12.05±0.25

EVD CORE

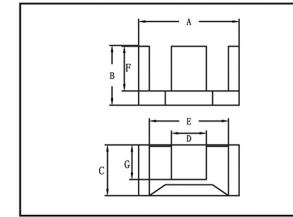


FIG.1

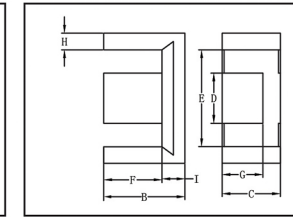


FIG.2

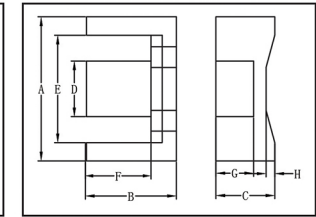


FIG.3

G	Cl	Ae	Le	Ve	AL±25%(nH/N²)			Weight
					FW40	FW44	FW95	
4.8+0/-0.4	1.4	27.7	38.7	1070	1460	1510	1860	5.6
8.3±0.3	0.85	73.07	61.8	4515.7	2610	2700	3440	24.6
8.2±0.3	0.76	99	74.8	7410	3020	3130	4020	39

LP CORE

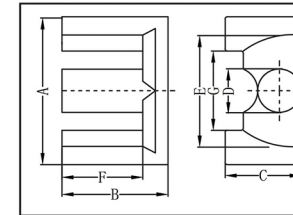


FIG.1

G	Cl	Ae	Le	Ve	AL±25%(nH/N²)			Weight
					FW40	FW44	FW95	
9.0±0.5	1.45	32.17	46.57	1498.3	1400	1210	1250	9.8
13.5±0.6	0.74	68.71	50.89	3496.7	2510	2590	3260	21
13.5±0.6	0.93	71.52	66.36	4746.3	2400	2400	2690	31.01